

KnowledgeBase: A Free Resource for Finding Answers Fast

As part of its service and support portfolio, Rockwell Automation® **KnowledgeBase** is the first resource for technical information support, online 24 hours a day, 7 days a week, 365 days a year. Customers can quickly find solutions to any questions related to the products, solutions and services of Rockwell Automation, saving both time and money.

Rockwell Automation KnowledgeBase allows customers to view the hottest topics and announcements of new features on the home page as well as establish proactive notifications by product line and by category. Multiple search options are available to find technical notes and documents, application notes, problems/solutions and release notes. Users can also download software patches.

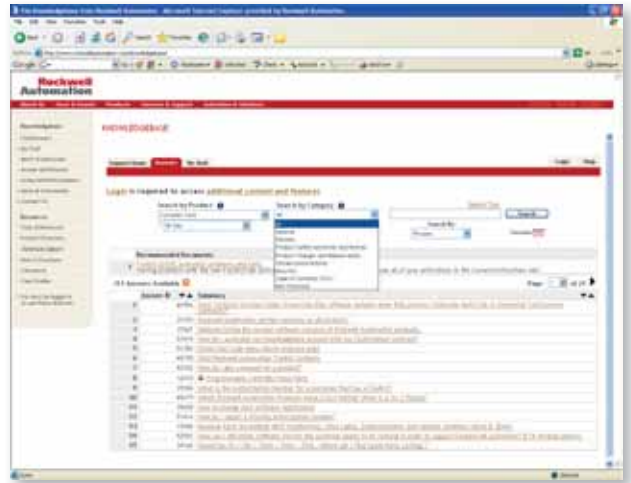
By subscribing to the KnowledgeBase, customers can register to receive automatic e-mail notifications for new and updated KnowledgeBase answers, product release notes, product safety advisories and product notices. They will also receive obsolescence notices and software and firmware updates.

Rockwell Automation KnowledgeBase features an intelligent search engine that ranks most popular answers and provides suggested alternatives. In addition, customers can set a default search criteria for more accurate returns.

Customers can also submit online questions directly to Rockwell Automation Technical Support through KnowledgeBase for an e-mail

response. KnowledgeBase serves to facilitate ongoing communication between Rockwell Automation and its customers.

For more information and to register, visit:
www.rockwellautomation.com/knowledgebase/



Stratix 8000 Provides Secure Integration with the Enterprise Network

The Rockwell Automation® **Stratix 8000™** industrial Ethernet switch line with Cisco technology provides secure integration with the enterprise network using tools familiar to IT professionals. At the same time, this modular-managed switch line allows for easy setup and diagnostics from within the Rockwell Automation Integrated Architecture™ using tools familiar to manufacturing professionals.

Stratix 8000 Release 2, available now, includes support for Precision Time Protocol (PTP). As defined in the IEEE 1588 Standard (Precision Clock Synchronisation Protocol for Networked Measurement and Control Systems), PTP synchronises the real-time clocks of devices in a network with nanosecond accuracy.

Release 2 also provides support for Smartport macros. The switch, desktop, router and wireless Smartport macros have been further optimised for industrial automation traffic.

In addition, there are enhancements related to the Common Industrial Protocol (CIP). When CIP is enabled on the switch, users can specify the VLAN ID to be used as the CIP interface. Also, the Device Manager Web interface Express Setup page includes fields for IP address and mask for the CIP VLAN. In addition, CIP indicates when the Compact Flash card is unplugged or not operating.

Release 2 also supports Dynamic Host Configuration Protocol (DHCP) per port, which can improve cost of ownership. This feature allows the

switch to assign IP addresses to end devices based on the physical port location of the device asking for its IP address.

Release 3 will include Resilient Ethernet Protocol (REP), a proprietary network protocol between Stratix 8000 and selective Cisco switches. It supports ring, ring segments and nested ring segments. Any redundant network can be built with REP segments.

For more information, visit:
www.ab.com/networks/switches/stratix8000.html

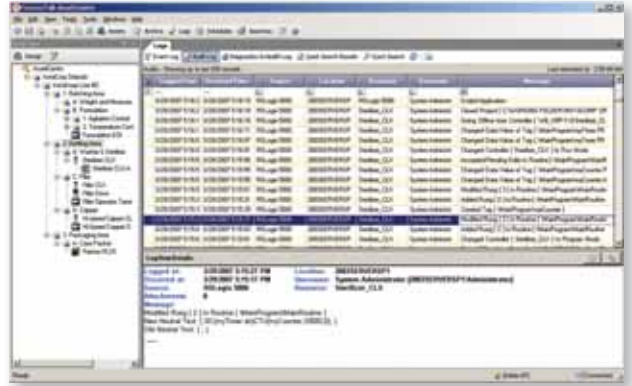


Minimise Downtime with FactoryTalk AssetCentre Machine Edition

Software provides smaller manufacturers and machine builders with a centralised tool for gathering, managing and securing data on up to 25 devices – such as control systems, drives and human-machine interface devices – using a single workstation. **FactoryTalk® AssetCentre Machine Edition** features a set of tools to help improve production system security, minimise risk, maximise uptime and improve operational efficiency.

The base functions allow users to track and manage configuration changes that occur in a machine, cell or line as well as the people who are able to perform these functions. Features include:

- **Source Control:** This leverages the Microsoft SQL 2005 Express database and provides automatic version control, allowing proper file management and single master relationships.
- **Audits:** The audit trail details user, device, computer, time and action taken.
- **Events:** Typical event information may include time, source generating or messaging.
- **Security:** A security model based on FactoryTalk Security minimises efforts to administer users and passwords on operator interfaces, historians, engineering and maintenance workstations.
- **Reporting:** Capabilities allow scheduled and on-demand searches and can include traceability information from Audit, Events or Source Control.



Machine builders can leverage FactoryTalk AssetCentre Machine Edition to provide added value for end users. The new version allows them to provide electronic versions of archived files, prints and drawings for delivery to end users. In addition, machine builders may leverage the new version to maintain an electronic record of the original configuration of the devices for warranty purposes.

For more information, visit:
<http://discover.rockwellautomation.com/go/ac>

Controller Redundancy Offers High Available Uptime



ControlLogix® redundancy allows a pair of redundant controllers to work as a unit in which the secondary controller chassis takes control if the primary chassis fails. TÜV-certified for fault-tolerant SIL 2 safety applications, ControlLogix redundancy can be applied to any system that requires the highest available uptime.

RSLogix™ 5000 V16.80 introduces **FactoryTalk™ Alarms and Events** and **Phase Manager Support** to the Enhanced ControlLogix Redundancy

platform. This platform consists of 1756-L6x controllers, a 1756 Redundancy Module, a 1756-CN2(R)/B ControlNet communications module and a 1756-EN2T EtherNet/IP module.

FactoryTalk Alarms and Events enables users to program alarm instructions only once, reducing programming time and efforts. Alarm conditions are detected quickly, and real-time alarming is performed in the controller. The alarm state is managed, processed and preserved by controllers, even if a computer goes down. In addition, alarm status is communicated only when a state changes, reducing network overhead and controller processing while improving overall system performance.

Phase Manager embeds an S88-compliant phase state model directly in a Logix-based controller. Phase Manager provides a structure to streamline the creation and implementation of phase logic.

The platform also supports selectable sync point configurations that will reduce cross-loading overhead. Add-On Instructions (AOIs), which allow specific code to be reused in the same application or on other projects, are also supported.

The Enhanced ControlLogix Redundancy platform allows up to two L61, L62 or L63 controllers. Users can easily upgrade redundant controller firmware at runtime without impacting the running system.

For more information, visit:
www.rockwellautomation.com